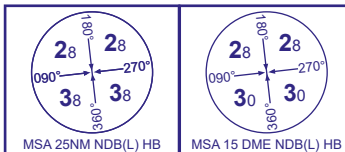
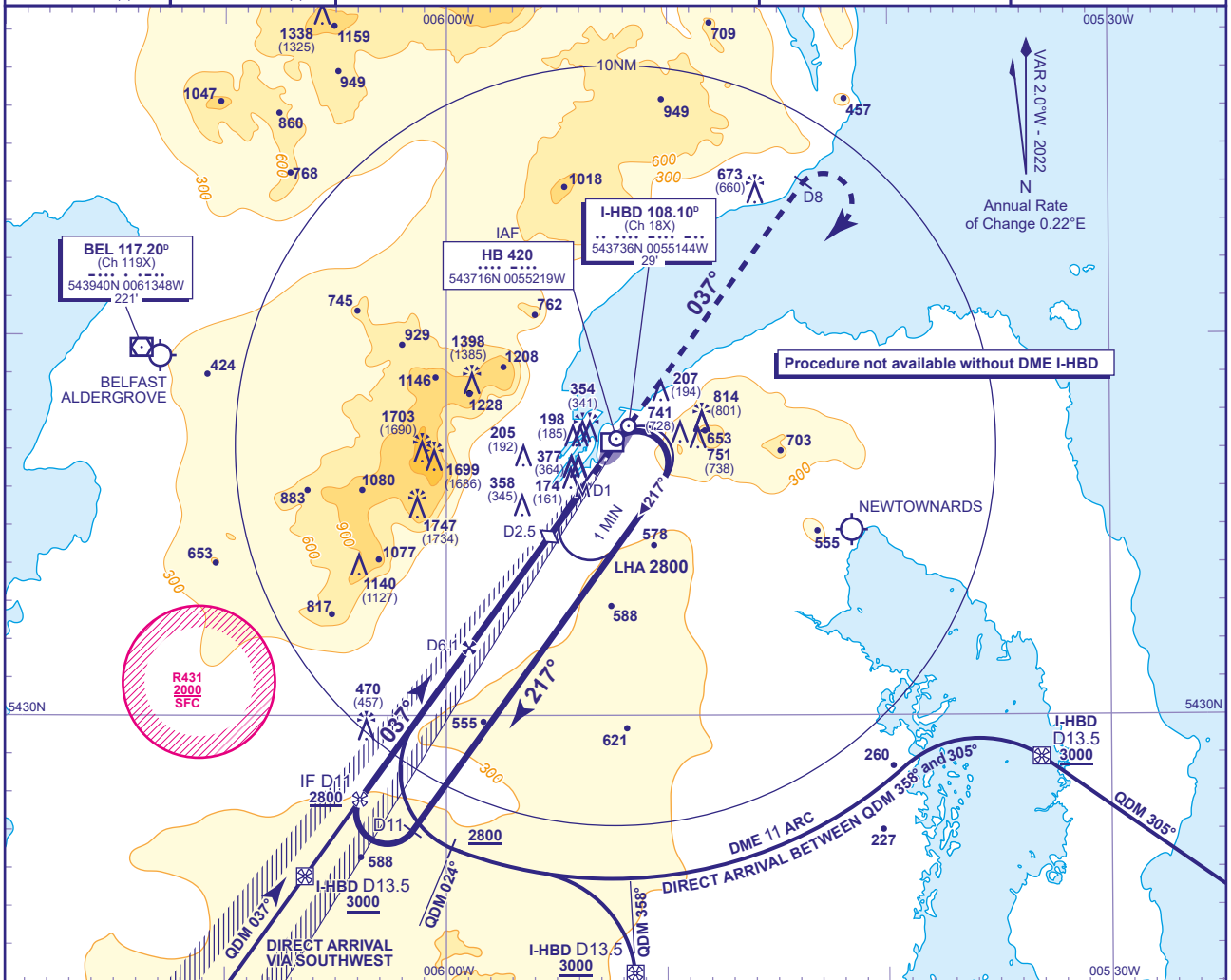


BELFAST CITY
LOC/DME/NDB(L)
RWY 04
(ACFT CAT A,B,C)



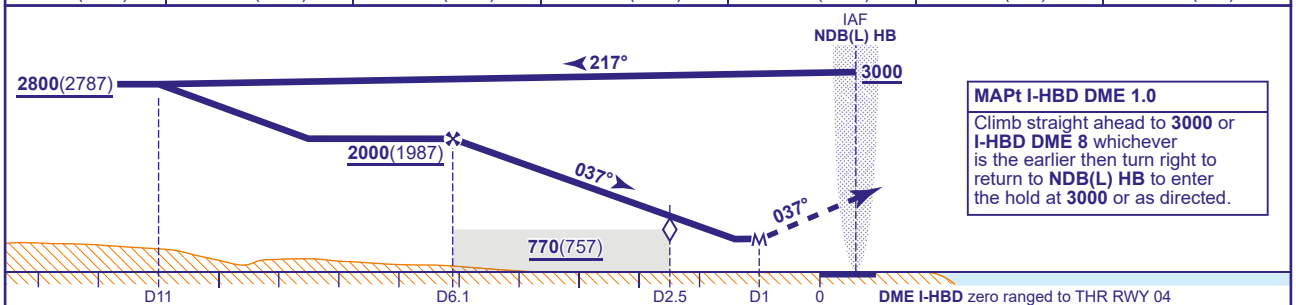
APP 130.850	BELFAST APPROACH	AD ELEVATION 15
TWR 122.830	BELFAST TOWER	THR ELEVATION 13
RAD 134.800	BELFAST RADAR	OBSTACLE ELEVATION
ATIS 124.580	BELFAST INFORMATION	1744 AMSL (1731) (ABOVE THR)
		BEARINGS ARE MAGNETIC

TRANSITION ALTITUDE
6000



RECOMMENDED PROFILE Gradient 5.24%, 320FT/NM

DME I-HBD	6	5	4	3	2.5 (SDF)	2
ALT(HGT)	1990(1977)	1670(1657)	1360(1347)	1040(1027)	880(867)	720(707)



Aircraft Category		A	B	C	Rate of descent	G/S KT	160	140	120	100	80
OCA (OCH)	Procedure	510(497)	510(497)	510(497)		FT/MIN	850	740	640	530	420
VM(C)OCA (OCH AAL)	Total Area	1040(1025)	1120(1105)	1800(1785)							
	Southeast of RWY 04/22	1040(1025)	1120(1105)	1230(1215)							

NOTE 1 Direct Arrivals available on request to ATC.

CHANGE (10/23): BEL VOR/DME ELEVATION REVISED.